

F. M. HWY 539

OAK VALLEY DRIVE

Lot No.	Acreage	Bearing	Distance
9	1.767	S29°00'17" E	384.06'
8	1.682	S39°41' E	339.41'
7	1.490	S18°58' E	318.98'
6	1.463	S18°18' E	318.18'
5	1.459	S12°59' E	312.59'
4	1.455	S16°59' E	316.59'
3	1.452	S15°18' E	315.18'
2	1.448	N29°00'17" W	315.00'
60	2.206	N24°50'42" E	362.19'
59	2.625	S61°13'23" W	458.82'
58	2.087	N29°00'17" W	455.77'
57	2.077	S45°13'48" W	451.48'
56	2.066	S45°19' E	451.19'
55	2.056	S44°51' E	448.91'
54	2.046	S46°52' E	446.92'
53	2.01	S44°47' E	444.74'
52	1.810	S42°10' E	421.10'
5	1.727	S37°56' E	372.96'

20' ELECTRIC ESM'T

A 157.89'
B 155.43'
C 125.44'
D 158.53'

N60°59'43" E

172.60'
269.64'
303.70'
N11°31'12.82" W
N65°09'17" W 29.66'
343.33'
N24°50'42" E 40.26'
213.60'
875.10'
244.98'
112.60'

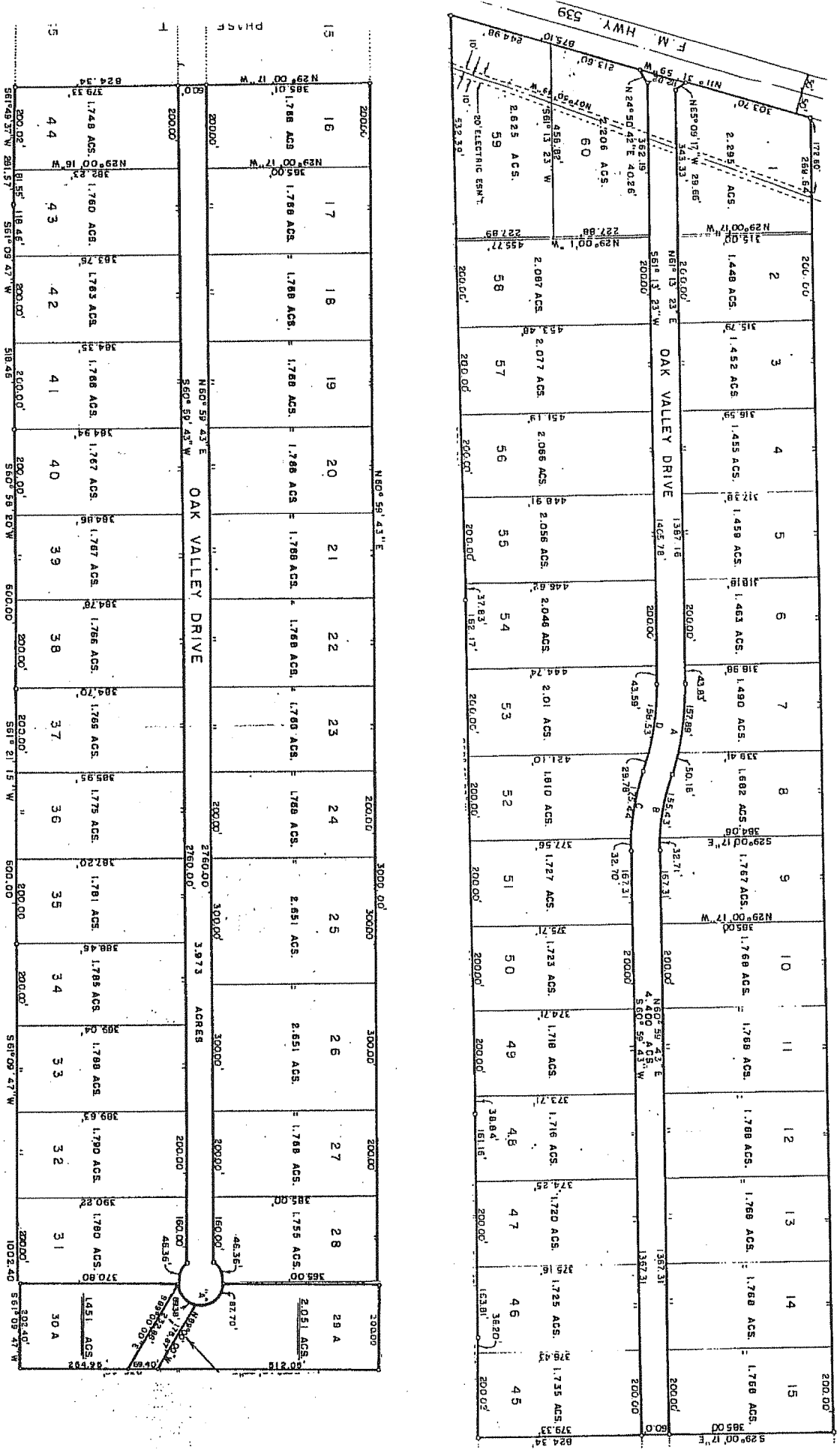
200.00'
200.00'
200.00'
200.00'
200.00'
200.00'
200.00'
200.00'
200.00'
200.00'

N29°00'17" W
N61°13'23" E
S61°13'23" W
S60°34'06" W
S60°42'33" W

1387.16'
1405.78'
1405.78'
1370.22'

200.00'
200.00'
200.00'
200.00'
200.00'
200.00'
200.00'
200.00'

167'
167'
167'
167'
167'
167'
167'
167'



OAK VALLEY DRIVE

ACRES

3.973

30000'

15000'

15000'

15000'

15000'

15000'

15000'

15000'

15000'

15000'

15000'

15000'

15000'

15000'

15000'

15000'

15000'

15000'

15000'

15000'

15000'

15000'

15000'

15000'

15000'

15000'

15000'

15000'

15000'

15000'

15000'

15000'

15000'

15000'

15000'

15000'

15000'

15000'

15000'

15000'

15000'

15000'

15000'

15000'

15000'

15000'

15000'

15000'

15000'

15000'

15000'

15000'

15000'

15000'

15000'

15000'

15000'

15000'

15000'

15000'

15000'

15000'

15000'

15000'

15000'

15000'

15000'

15000'

15000'

15000'

15000'

15000'

15000'

15000'

15000'

15000'

15000'

15000'

15000'

15000'

15000'

15000'

15000'

15000'

15000'

15000'

15000'

15000'

15000'

15000'

15000'

15000'

15000'

15000'

15000'

15000'

15000'

15000'

15000'

15000'

15000'

15000'

15000'

15000'

15000'

15000'

15000'

15000'

15000'

15000'

15000'

15000'

15000'

15000'

15000'

15000'

15000'

15000'

15000'

15000'

15000'

15000'

15000'

15000'

15000'

15000'

15000'

15000'

15000'

15000'

15000'

15000'

15000'

15000'

15000'

15000'

15000'

15000'

15000'

15000'

15000'

15000'

15000'

15000'

15000'

15000'

15000'

15000'

15000'

15000'

15000'

15000'

15000'

15000'

15000'

15000'

15000'

15000'

15000'

15000'

15000'

15000'

15000'

15000'

15000'

15000'

15000'

15000'

15000'

15000'

15000'

15000'

15000'

15000'

15000'

15000'

15000'

15000'

15000'

15000'

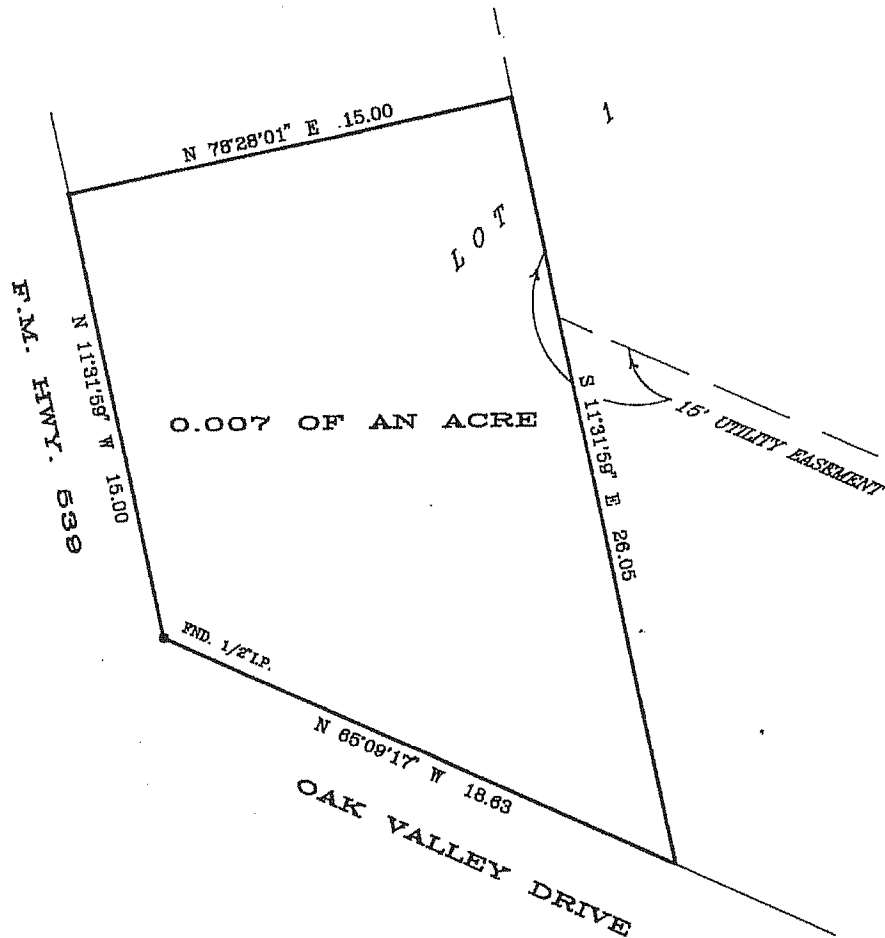
15000'

15000'

15000'

15000'

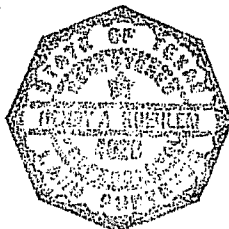
15000'



SCALE: 1" = 5'

PLAT OF 0.007 OF AN ACRE,
 BEING A SIGN EASEMENT OVER AND ACROSS
 THE SOUTHEAST CORNER OF LOT 1,
 OAK VALLEY SUBDIVISION, PHASE I,
 PLAT RECORDED IN VOLUME 4, PAGE 3,
 FELIPE ELUA GRANT NO. 9, ABSTRACT 9,
 WILSON COUNTY, TEXAS.

PREPARED DECEMBER 11, 2000



Henry A. Kuehlem
 HENRY A. KUEHLEM
 REGISTERED PROFESSIONAL LAND SURVEYOR
 NO. 4020

H.A. KUEHLEM SURVEY COMPANY
 14350 NORTHBROOK DRIVE SUITE 130
 SAN ANTONIO, TEXAS 78232
 PHONE: (210) 490-7847
 FAX (210) 490-7857